



# Treasure Talk

THE MONTHLY NEWSLETTER OF THE  
CENTRAL FLORIDA METAL DETECTING CLUB  
Founded in 1973



## May 2010

### Club Officers

President Alan James	386-717-5775 <a href="mailto:nonialan@earthlink.net">nonialan@earthlink.net</a>
Vice-President Bill Shackelford	407-323-2954
2nd Vice-President Bill Green	
Secretary Debbie Green	
Treasurer Chuck Hosbein	

### Club Volunteers

Half/Half	George and Bea Case
Raffle's Refreshments	Betty Shackelford Donna Rothery Lonna Leist
Find of the month table's	Rob Loucks
Photographer	Ralph Flippo Rob Loucks Lorrie Sprigg Jerry Hitson
Webmaster	Jerry Hitson
Activity Director	Lorrie Sprigg <a href="mailto:Africanlor@aol.com">Africanlor@aol.com</a>
Newsletter	Jerry Hitson <a href="mailto:G8r81@cflrr.com">G8r81@cflrr.com</a>

A Great BIG thanks to all these people!

### Come Join Us!

We will be eating at the **Colorado's Steak Place**. It is just north of the meeting place. Park at the meeting building and walk over. We eat at 5:30. If you would like to join us, we would be happy to see you. BYOM!

The club meets the 2<sup>nd</sup> Friday of each month at the Sanford Garden Club. It is located about 2 blocks south of Lake Mary Blvd. on the east side of 17-92. For more information contact Bill Shackelford at (407) 323-3401 or Alan James at (386) 717-5775

Club web site: [www.thecfmdc.com](http://www.thecfmdc.com)

You are receiving this newsletter because you are a V.I.P.

**REMINDER:** The club due's are \$25 for the year and a one-time membership fee of \$15. If you are paying by check please make it out to the CFMDC

## President's Corner

It's mid May already and we have several of upcoming activities to look forward to, but in order to keep the club solvent, it is really important that we collect the yearly dues from members who want to remain active. Currently, several members have still not paid their annual membership dues. Active membership in the Central Florida Metal Detecting Club allows you to participate in all club sponsored events as well as receive the club newsletter each month. The dues you pay are used to provide for building rent, club insurance, hunt prizes, December dinner, find of the month plaques, refreshments, and many other things throughout the year. This is your club and to be fair to everyone, the club will not be sending out newsletters to members who still have not paid their dues or have chosen to go on inactive status after this month. This is a big deal and we are asking everyone to pay your dues and support the club. Membership in the CFMDC is well worth the few dollars it takes to stay active. We don't want to lose even one member, so please take a few minutes to mail in your dues or better yet show up at the next meeting and get involved again.

Prizes, prizes, prizes. On May 15, 2010 we will be having a team "poker hunt." The time, location, and cost will be announced by the activity director, Lorrie Sprigg. Lorrie puts a great deal of effort into these events and supporting the club by attending is one way you can show your appreciation. This hunt should be a lot of fun for everyone so keep that Saturday open and make plans now to attend.

Plans are also being firmed up for a night hunt at the beach. This type of hunting is different and takes a special interest to get good at it but it has its' own rewards. If you've never been hunting at night, you'll want to stay in the loop and get all the details as soon as they are made public.

I'd like to invite anyone in the club who has a detector to pack it up and bring it with you when you come to the meetings. You don't need to bring your detector inside unless asked. The "expert's corner" is generating quite a bit of interest among the club newbies so if your detector is available you

may be able to lend some valuable information when a question is asked. Hands on experience is the best way to teach someone the specifics of your machine. Who knows, maybe your advice and guidance may one day help bring a new member into the club.

We have started to keep track (as well as possible) of the names of the members who are inviting new guests to the club meetings. Hopefully, at the end of the year, we will be able to name a "Recruiter of the Year" for the first time ever. I'm sure it will be worth the effort.

Bring in your finds from this month and display them. We all want to see what your month was like. Even if you don't feel that your find is worth sharing, we do. And besides, you just might win a trophy plaque to commemorate the event.

For record keeping clarification; when you enter your finds on the table for the find of the month competition, please enter the current month only. Example: if you enter coin single this month, please indicate on your entry sheet the month as MAY only. Do not enter Apr - May. We'll talk a little about this at the meeting just so we are all on the same page.

Please keep all of the members who have been ill in your prayers. It can help.

## Secretary's Report - Debbie Green

### CFMDC Meeting Notes

The April meeting of the Central Florida Metal Detecting Club was called order at 7:32 p.m. by club president Alan James. The meeting was opened with the Pledge of Allegiance led by Bill Green.

Secretary report – Read with the correction, March group coin second place winner was George Case, report voted upon and accepted.

Treasurer report – Read, voted upon and accepted.

Birthday in March members received gold dollars.

Anniversaries for March received gold dollars.

Guests were recognized and received gold dollars.

George Case - Reminded everyone about the silver drawing and how tickets were to be given out.

Alan James – Presented an award to Betty Shackelford for her volunteer work for the club. It was noted that if you have not paid your club dues as of tonight's meeting, you cannot show finds on the find of the month table.

Rob Hill – Discussed the "Club Cards" for the club. Rob brought three boxes of the new cards that he had printed for the club.

Lorrie Sprigg – Upcoming Poker Hunt will take place after the May meeting.

Alan James – Showed the new plaques to be given to first place winners, and beginning tonight the club will also give metal plates instead of cash for monthly finds winners.

For new club members, if they bring their detectors to the meeting a club member will work with them regarding equipment tips.

Break – Vote on finds of the month, and enjoy refreshments.

Silver Drawing - \$6.50 face value to winner, Jerry Hitson, and \$6.50 face value to the club. At the May meeting, the collection will begin for the next drawing to be held in August.

Lorrie Sprigg – Still working on a date in June or July for a Night Hunt planted on the beach.

Returning Members were Harriet Blackwell and Michael Rosendahl.

Bank Night Drawing - Won by Lorrie Sprigg.

## Point Standings

Bill Green	74	Lonnie Lytle	4
George Case	68	Rob Loucks	4
Ralph Flippo	31	Walt Taylor	3
Jerry Hitson	25	Ann Hartle	3
Roland Davis	25	Carol Taylor	2
Lorrie Sprigg	25	Alan James	2
Rob Hill	23		
Shirley DeVary	22		
Dave Gascoyne	17		
Chuck Hosbein	11		
Brent Petherick	9		
Jim Burdick	9		
Nanette Burdick	8		
John Ayers	8		
Bill Robinson	6		
Jerry Sprigg	5		
David Stone	4		

PUT SOME POINTS ON THE SCORE BOARD AND HAVE FUN

**If you don't enter, you can't win!**



# Finds of the Month

## Single Coin

1.	Bill Green	1876 Seated Liberty quarter
2.	Lorrie Sprigg	Chinese coin
3.	Dave Gascoyne	1888 'V" nickel

## Group Coins

1.	Bill Green	Large collection of coins
2.	George Case	Clad, pennies, tokens
3.	Lorrie Sprigg	Half dollar, assorted coins

## Single Jewelry

1.	Bill Green	14k gold ring with amethyst
2.	Shirley DeVary	Heart pendant on chain
3.	George Case	Little angel

## Group Jewelry

1.	Bill Green	Large assortment of jewelry
2.	Ralph Flippo	18k gold pendant & jewelry
3.	Jerry Hitson	Ring and earrings

## Single Artifact

1.	Dave Gascoyne	Patriotic medallion
2.	Rob Hill	Monet costume jewelry
3.	Alan James	Antique plow tip

## Group Artifacts

1.	Dave Gascoyne	Civil and Seminole war relics
2.	George Case	Old button & belt buckle
3.	Bill Green	Old spoons & misc. items

## Single Odds/Ends

1.	Bill Green	Small religious medal
2.	John Ayers	Floating plane
3.	Lorrie Sprigg	Staples gift card \$90.93

## Group Odds/Ends

1.	Bill Green	Keys, file & misc.
2.	Shirley DeVary	Miscellaneous items
3.	George Case	Keys & stuff

## Finds of the Month

First Place

*Photos Courtesy of Rob Loucks*

### Single Coin - Bill Green



### Group Coins - Bill Green



### Single Jewelry - Bill Green





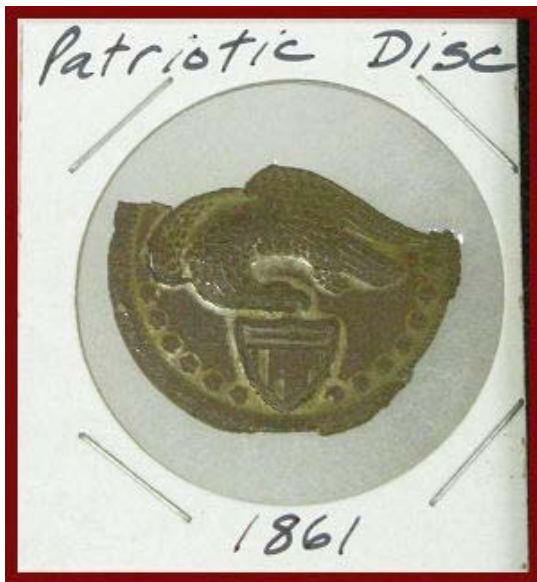
Group Jewelry - Bill Green



Group Artifact- Dave Gascoyne



Single Artifact - Dave Gascoyne



Single Odds/Ends - Bill Green



Group Odds/Ends - Bill Green



## **“POKER HUNT”**

Where: Greenwood Lake Park

When: Saturday, May 15, 2010

Time: **10:00 sharp**

Cost: \$10.00

**Bring a food dish to share - let's stay and eat lunch!**

### “Object of the Hunt”

Coins will be attached to buried playing cards.

After the hunt, teams will be formed.  
The team with the best poker hand wins.  
First, Second and Third place winners.  
Other prizes may be awarded

Come 30 minutes early for some on site training.

We'll help you get ready for the hunt.  
Someone will be there to help answer questions  
and show you tips on how to use your machine.

From I-4:

Take Lake Mary East  
Make a R onto Longwood Lake Mary Rd.  
Second light make a R onto Greenway Blvd.  
Greenwood Lake Park is on the R

From the club:

Take R onto 17-92  
Then L onto Lake Mary Blvd.  
Go about 8 lights  
Take a L onto Longwood Lake Mary Road  
Past high school on R  
Take immediate R onto Greenway Blvd.  
Park is on R Greenwood Lake Park

If you get lost

Contact Lorrie 407-463-4587

[Africanlor@aol.com](mailto:Africanlor@aol.com)

Greenwood Lake Park  
**660 GREEN WAY BLVD**  
**LAKE MARY, FL 32746**

