



Treasure Talk

THE MONTHLY NEWSLETTER OF THE
CENTRAL FLORIDA METAL DETECTING CLUB
Founded in 1973



February 2010

Club Officers

President Alan James	386-717-5775 nonialan@earthlink.net
Vice-President Bill Shackelford	407-323-2954
2nd Vice-President Bill Green	
Secretary Debbie Green	
Treasurer Chuck Hosbein	



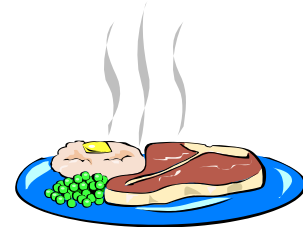
Club Volunteers

Half/Half	Ron & Shirley DeVary
Raffle's Refreshments	George and Bea Case Donna Rothery Lonna Leist
Find of the month table's	Rob Loucks
Photographer	Ralph Flippo Rob Loucks Lorrie Sprigg Jerry Hitson
Webmaster	Jerry Hitson
Activity Director	Lorrie Sprigg Africanlor@aol.com
Newsletter	Jerry Hitson G8r81@cflrr.com

A great BIG thanks to all these people!

Come Join Us!

We will be eating at the **Colorado's Steak Place**. It is just north of the meeting place. Park at the meeting building and walk over. We eat at 5:30. If you would like to join us, we would be happy to see you. BYOM!



The club meets the 2nd Friday of each month at the Sanford Garden Club. It is located about 2 blocks south of Lake Mary Blvd. on the east side of 17-92. For more information contact Bill Shackelford at (407) 323-3401 or Alan James at (386) 717-5775

Club web site: www.thecfmdc.com

You are receiving this newsletter
because you are a V.I.P.

REMINDER: The club due's are \$25 for the year and a one-time membership fee of \$15. If you are paying by check please make it out to the CFMDC

President's Corner

I hope everyone made it through the long cold January without too much adverse effects. I for one am happy to see some light at the end of the tunnel with the return of more Florida like weather and I'm going to try not complaining as much when the "heat" returns full force. We'll see how that goes.

Last month we started down a path of updating some of the things that have been done over the years and also bringing in a few new ideas.

I'd like to continue the process as time allows but I don't want to take up valuable meeting time to complete every detail, so I will be asking for help from the board members and from the general club membership. Most of the day to day business tasks I'd like to tackle outside of the regular club meetings and have a report on progress presented to the club as we move along. Items which need the membership's attention will be brought forward during the regular business meetings and discussed. Any and all club related items will be open for discussion at any meeting by request of the club membership from the floor. Please don't wait for a topic to come up – you be the one to bring it up for discussion. Remember, this is your club so feel free to ask questions and make suggestions.

During the meeting in January, we voted to renew the rules which pertain to the "finds of the month table." Simply stated, everyone is encouraged to bring in their finds each month and place them on display for the membership to vote on. The one major change to this event is that everyone "must" have their finds on the table before the meeting starts at 7:30PM. After the meeting starts, the finds table will be closed for any new items. Even though the finds table closes when the meeting starts, we'd still like to see everyone's monthly finds so any late entries will have a place reserved at the back of the room for display only. Items on this display table will not be voted on for find of the month and will not receive points toward the find of the year. Hopefully this method will help reduce some of the confusion which develops if someone is late to the finds table and it will certainly cut down on some of the extra effort required by Rob Loucks and those working on the finds table.

Rob does such a great job every month but he is not recognized very often. Right here and right now, I'd like to say a special "Thank you" to Rob for many years of dedicated service to the club. Thanks Rob from all of us.

While I'm on the subject of monthly finds, this is a good time to remind everyone that this meeting is the awards meeting and voting will take place to determine the "Finds of the Year" winners. Take the time to check out the archives section of the club website and bring in any of your first place winning items from the past year that you want in the competition for "Find of the Year."

A suggestion was made at the last meeting that the club develop a lending library. The books for the library will be made available for members to borrow and return the following month. This is a massive project and one that will take a lot of time to complete but you can help by bringing a list of books or magazines that you have to loan out. Ultimately, this lending library will be listed online on the club's website for everyone to use. A big "Thank you" goes out the Jerry Hitson for heading up this one as well as putting together the newsletter every month.

Remember to bring in a silver coin and use it to purchase a chance or two at winning the newly created "Silver 50/50" raffle. Only silver coins will be able to purchase tickets for this one. The owner of the winning ticket will walk away with one half of the silver in the raffle jar and with the price of silver soaring to new heights every day, a winning ticket could be very valuable indeed. This new raffle will be held during the April meeting. You don't have to be present to win so buy your tickets now!

January began a transition, of sorts for the Central Florida Metal Detecting Club. This month, that journey continues and for the benefit of the entire club, I'd like to put out a special request to each and every member. At this meeting in February, I'd like to ask everyone that can possibly do so, to bring in or send in the money for your membership dues. With support from each of you, the club will be able to maintain insurance and rent and all of the other things that make this such a fun organization to be involved with.

In February, the first club hunt of the year will be held. This hunt will be "poker hunt" and should be a lot of fun. At this hunt I'd like to invite anyone that needs a little "training" or a few "tips" to show up at the hunt site about 30 minutes early. Experience hunters will be on site to answer questions and get you started on the right foot. The more you learn about our hobby, the more you can enjoy it. Lorrie Sprigg will have additional details to share at the meeting. I'd like to thank Lorrie for all she does to help pull details together and make the club activities successful.

In closing I'd like to thank all of the members of the club and especially the members of the board for your continued help and support. Without all of you this job might be too much to handle and for sure not much fun. Thank you all.





Secretary's Report - Debbie Green

CFMDC Meeting Notes

The January meeting of the Central Florida Metal Detecting Club was called to order at 7:32 p.m. by club president Alan James. The meeting was opened with the Pledge of Allegiance led by Bill Green.

The board and volunteers were introduced. Ray Leist was thanked for serving on the board for over 30 years as president.

Secretary report was read. One December report addition was requested by Bill Shackelford: Ray and Lonna Leist were presented with lifetime club memberships.

Treasurer report was read and accepted.

George and Bea Case will audit bank night drawing tokens and report the numbers currently in the token pool.

With over 100 current members, some are seasonal residents, and recruiting new members for the club is one of the goals for 2010.

Alan James joke of the month was "Alan James".

Lorrie Sprigg brought a sample of the updated club address list. New member, Rob Hill, has volunteered to sponsor the printing, and the club thanked him for his support.

Alan presented a new "50/50 Silver Coin Raffle", that was accepted by attendees. He encouraged members to bring a silver coin to buy a chance to win big. One silver dime = two chances, one silver quarter = five chances, and one silver half dollar = 10 chances to win, etc. The drawing will be held every fourth month and someone will take home half the total in the jar at each drawing. Members need not be present to win as their name will be on the tickets. Silver coins are the only acceptable means of purchasing tickets for this drawing.

Discussion opened up to the floor for suggestions:

Roland Davis - (1) Call the previous members to see if they will join the new club. (2) Bank account has not been audited in the past. Suggest 30 to 60 days for the account to be updated and balanced, and begin quarterly financial reports. (3) Delay find winners prize until after April 1, 2010 to build funds. (4) Buddy/mentoring system, pairing long time members with new members.

Jerry Hitson - (1) Reinstigate the new member package to include the bylaws, code of ethics, etc., and post the documents on the website. (2) Library could be created, with a collection of books that members are willing to loan. Jerry agreed to create a "Club Library" preliminary logistical plan. Also another member suggested to create a "recruiter of the year award".

Roland Davis - (1) Club library can contain subjects that relate to metal detecting, i.e., historical research, cleaning metal and straightening metal. (2) Roland agreed to create a "Masters Corner" preliminary logistical plan.

Motion by the President: Finds must be placed on the finds table before the Pledge of Allegiance. Once the pledge begins, no more finds will be accepted on the finds table, and a display table will be available at the back of the meeting room for those who would like to display their finds. Rob Loucks will make the decision into which category an item or group of items will be placed. Motion was seconded and voted upon - **Motion passed.**

Bill and Betty Shackelford were thanked for bringing cupcakes to celebrate Lorrie Spriggs' birthday.

Chuck Hosbein reminded us that club badges are still available for \$5.00.

New members: none.

Bank night drawing: no winner.

Half and half drawing: Lorrie Spriggs won \$27.00.
Meeting closed by the president at 9:37 p.m.



Finds of the Month

Single Coin

1.	Roland Davis	Roman Coin
2.	George Case	1986 Dominican Republic coin
3.	No Entry	

Group Coins

1.	Roland Davis	Silver Wheat Barber
2.	George Case	Wheaties, Foreign, lots of coins
3.	Brent Petherick	Wheaties, Jamaican 10c cross cut out penny

Single Jewelry

1.	George case	Silver Ring
2.	Roland Davis	Tri-gold ring
3.	No Entry	

Group Jewelry

1.	George Case	Rings, bracelets, misc. items
2.	Roland Davis	Lots of jewelry
3.	No Entry	

Single Artifact

1.	Jerry Hitson	Silver medallion
2.	Roland Davis	Ice box latch
3.	No Entry	

Point Standings

Points will be entered after Feb.meeting

Roland Davis	24		
George Case	19		
Jerry Hitson	12		
Brent Petherick	2		
Walt Taylor			
Carol Taylor			

PUT SOME POINTS ON THE SCORE BOARD AND HAVE FUN

Group Artifacts

1.		**NO ENTRY**
2.		**NO ENTRY**
3.		**NO ENTRY**

Single Odds/Ends

1.	Jerry Hitson	1920's Studebaker emblem
2.	Walt Taylor	Lapel pin
3.	Carol Taylor	NYC 9/11 pin

Group Odds/Ends

1.	Roland Davis	Lots of stuff
2.	George Case	Stuff
3.	Jerry Hitson	Junk

Finds of the Month

First Place

Photos Courtesy of Rob Loucks

Single Coin - Roland Davis



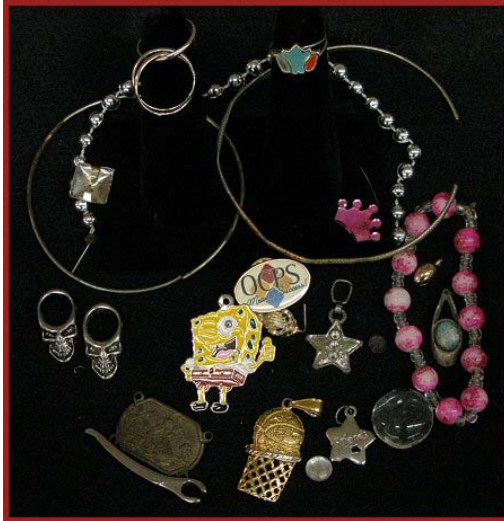
Group Coins - Roland Davis



Single Jewelry - George case



Group Jewelry - George Case



Single Odds/Ends - Jerry Hitson



Group Odds/Ends - Roland Davis



Single Artifact - Jerry Hitson



Group Artifacts - NO ENTRY

Lorrie Sez:



I want to thank those who helped me with the kitchen duties. Thanks to Betty for bringing those yummy cupcakes for my birthday and Bea for the brownies. I hope to have some volunteers to take turns in bringing in the treats.

The directory books are finished! Hurray! They will be available at the next meeting. We are having a hunt on the 13th of this month, details in this newsletter. Ya all come! Lorrie

Don't Forget!!

February is "Finds of the Year" competition!! If you won any category, you can enter the Finds of the Year.

If there is any question to what you had in your winning entry, just go to the [ARCHIVES](#) page on the CFMDC Webpage and look up your finds!



February Poker Hunt

When: Saturday, Feb. 13, 2010

Time: 10:00 am Sharp

Where: Greenwood Lake Park

Cost: \$5.00 per person

Bring a packed lunch.

Water and munchies provided.

Come 30 min early for some on site training.

We'll help you get ready for the hunt.

**Someone will be there to help answer questions
and show you some tips on how to use your machine**

Directions:

From the club

Take a R onto 17-92

Then L onto Lake Mary Blvd.

Go about 8 lights

L onto Longwood Lake Mary Road

Past high school on R

Take immediate R onto Greenway Blvd.

Park is on R - Greenway Lake Park

From I-4

Take Lake Mary East

Make a R onto Longwood Lake Mary Rd.

Past high school on R

Take immediate R onto Greenway Blvd.

Coins will be attached to buried playing cards.
After the hunt, teams will be formed. The team
with the best poker hand wins. First, Second and
Third place winners. Other prizes may be
awarded.

If lost call: 407-463-4587

For additional info.

Contact Lorrie 407-463-4587 or
email her at Africanlor@aol.com

